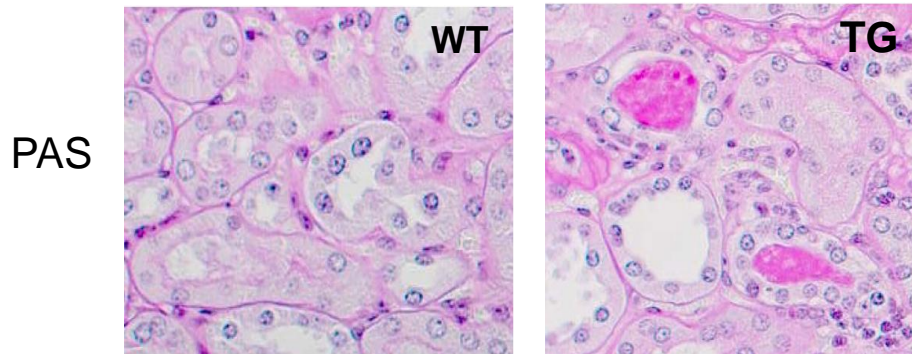
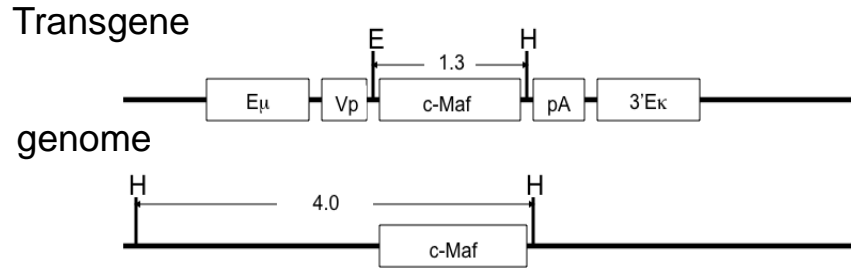


from Laboratory of Anatomy and Embryology,

Generation of new animal model for human Multiple Myeloma



Tg mice display hepatomegaly and splenomegaly.
Hyper immunoglobulinemia with Myeloma kidney in Tg mice

This laboratory generated new animal model for human Multiple Myeloma that contains same gene mutation identified in human Multiple Myeloma patients. This new model is able to use new drug screening for the disease.

Journal Club: *Cancer research*, 2011; 71: 339-348
Cancer research, 2006; 66: 812-819