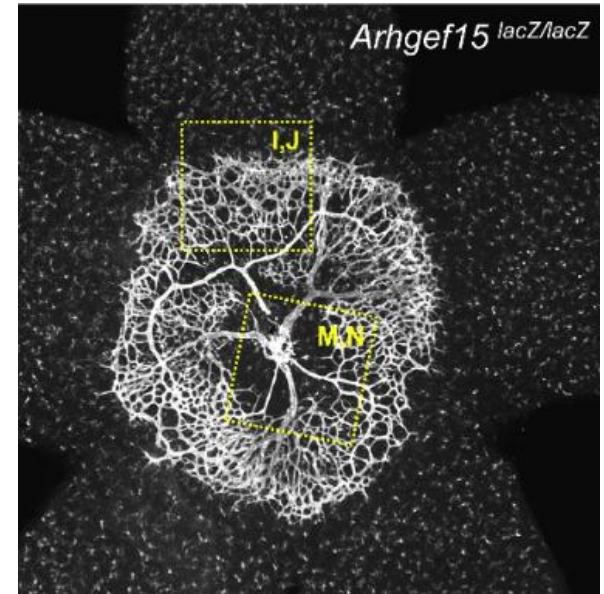
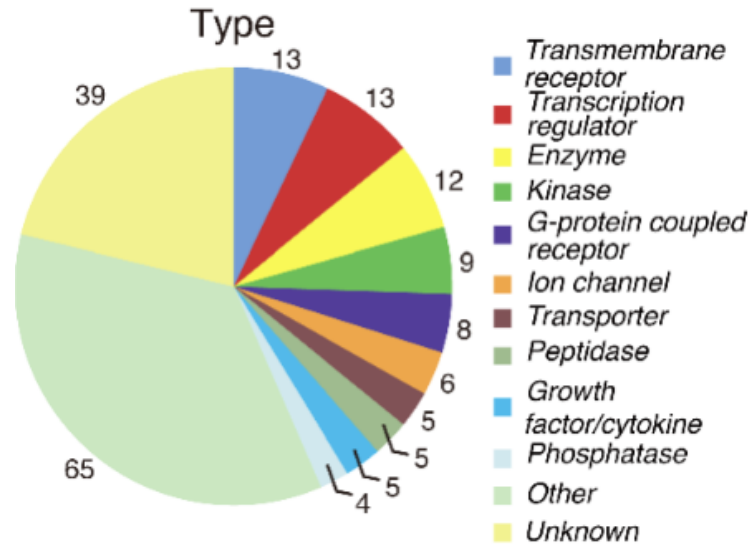


from *Anatomy and Embryology*,

A catalog for endothelial cell-enriched genes - - - - -



This laboratory has identified genes which are expressed abundantly in developing endothelial cells. Two knock-out animals were created and showed defective retinal vascularization. The catalog could be useful for the research of angiogenesis during normal development as well as pathological condition such as cancer.

Journal Club: *Blood*, 2012; 120, 914-923 and cover figure.