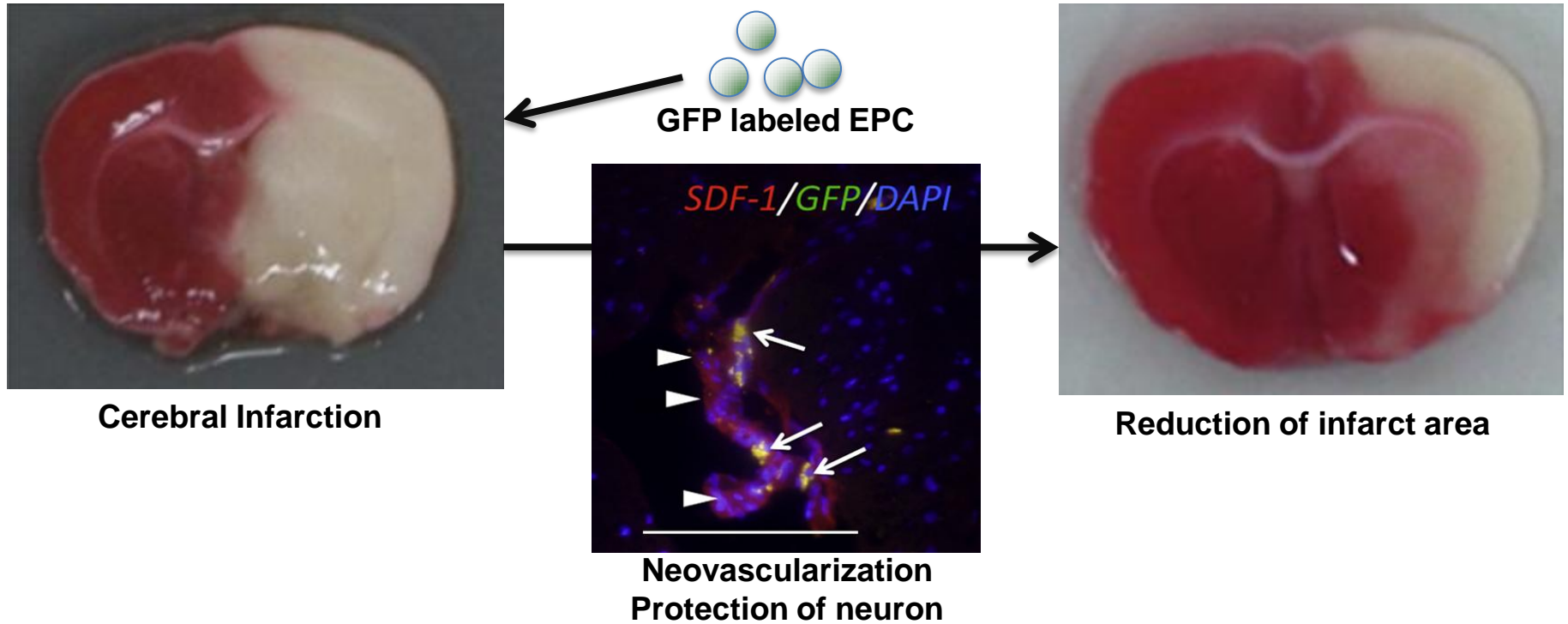


from the Laboratory of Regenerative medicine and Stem Cell Biology,

Good EPC repair Cerebral Infarction



Cell therapy treating cerebral infarction with endothelial progenitor cell (EPC). Functional EPC migrated along ischemic region blood vessels and protected neural cells in an *in vivo* model.

References:

Biochem Biophys Res Commun. 2012; 418: 87-92.

Blood. 2007; 110: 151–160.